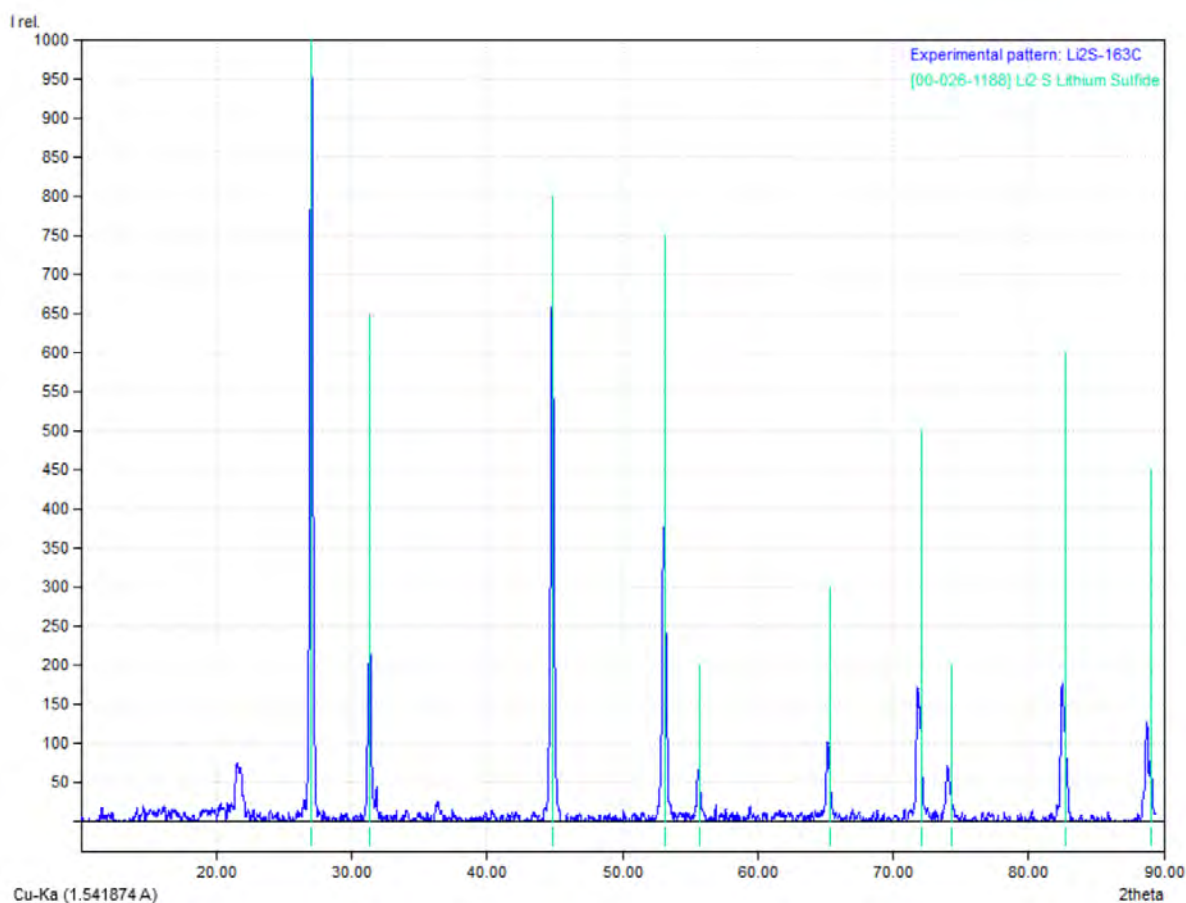


Materials Specification

Name:	Lithium Sulfide	
Item #:	LI-2920	
Formula:	Li ₂ S	
CAS #:	12136-58-2	
Description:	White to off-white powder, powder 100% screened to -200 mesh (less than 75 microns)	
Purity:	Metals Basis, 99.9%	
X-Ray Analysis:	Matches to JCPD Trace 23-369	
Trace Analysis Limits (in PPM):	Aluminum	200
	Calcium	200
	Iron	75
	Potassium	100
	Sodium	100
	Silicon	100

XRD Pattern Analysis

Sample	Lot #	Measurements
Li ₂ S	163	XRD



Please Note:

The peaks at 21.5, 24.0 and 36.5 deg two theta are due to the polyethylene enclosure protecting the Lithium Sulfide from atmospheric degradation during the X-ray analysis.